



MONTHLY MEMBERSHIP PROGRESS REPORT

District 27 B2

Results as of: 5/31/2017

GMT: Judy Hankom

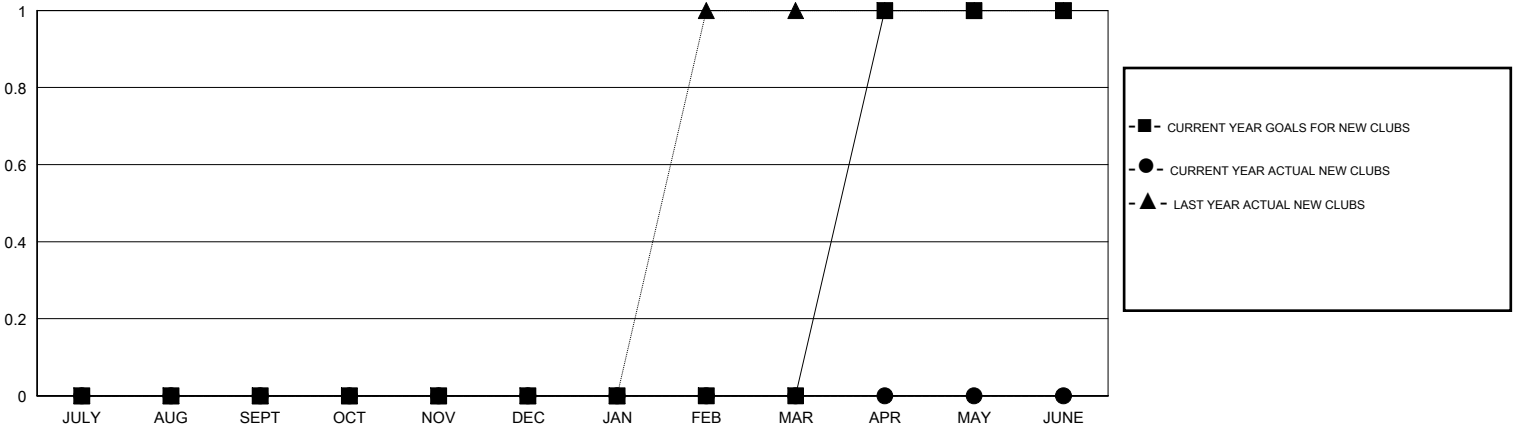
LOCATION WISCONSIN

GMT CA

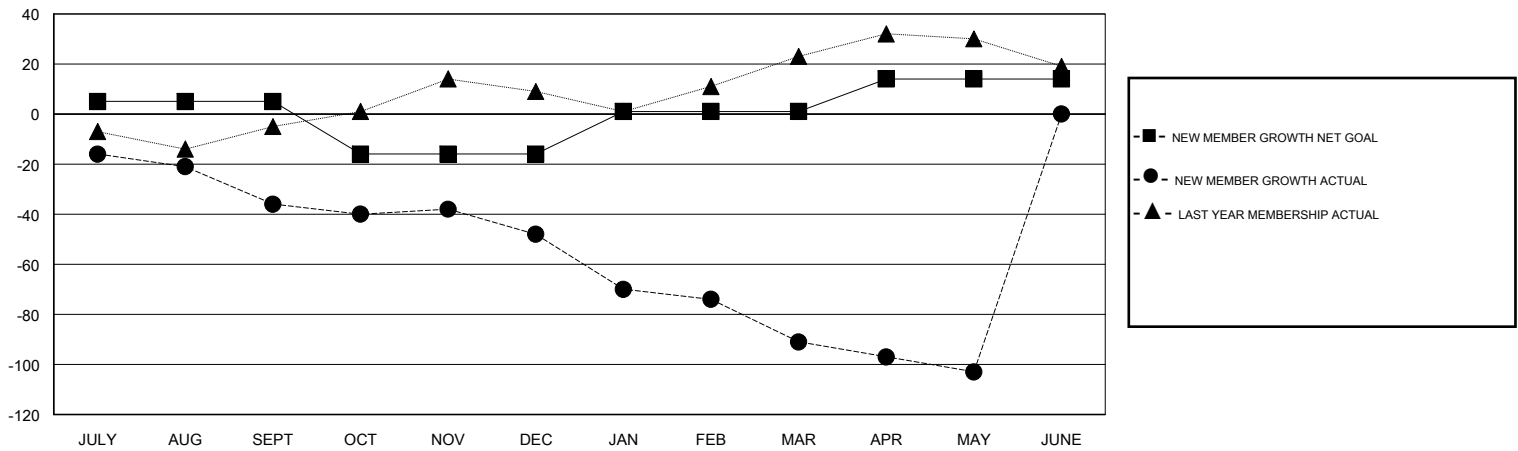
Clubs			
RESULTS FOR 2016-2017			
QUARTER	NEW CLUB GOAL	NEW CLUBS	DROPPED CLUBS
JULY/AUG/SEPT	0	0	0
OCT/NOV/DEC	0	0	0
JAN/FEB/MAR	0	0	0
APR/MAY/JUNE	1	0	0

Members			
RESULTS FOR 2016-2017			
QUARTER	NEW MEMBER GROWTH NET GOAL (not reinstated or transfers)	NEW MEMBER GROWTH ACTUAL (not reinstated or transfers)	DROPPED MEMBERS ACTUAL (including transfers)
JULY/AUG/SEPT	5	34	70
OCT/NOV/DEC	-21	31	43
JAN/FEB/MAR	17	22	65
APR/MAY/JUNE	13	24	36

GOALS AND ACTUAL NEW CLUBS CUMULATIVE



GOALS AND ACTUAL MEMBERS CUMULATIVE



DROPPED CLUBS: 0	48 CLUBS OF 70 ADDED 1 OR MORE NEW MEMBERS	<u>GENDER DISTRIBUTION</u>	
DROPPED MEMBERS		MALE	1,906 (82.76%)
DECEASED	38	FEMALE	397 (17.24%)
CLUB CANCELLED	0	TOTAL FAMILY UNIT MEMBERS	
OTHER	176	367	
TOTAL	214	FAMILY MEMBERS PAYING HALF DUES	
		186	

[CLICK HERE FOR CUMULATIVE MEMBERSHIP DATA](#)